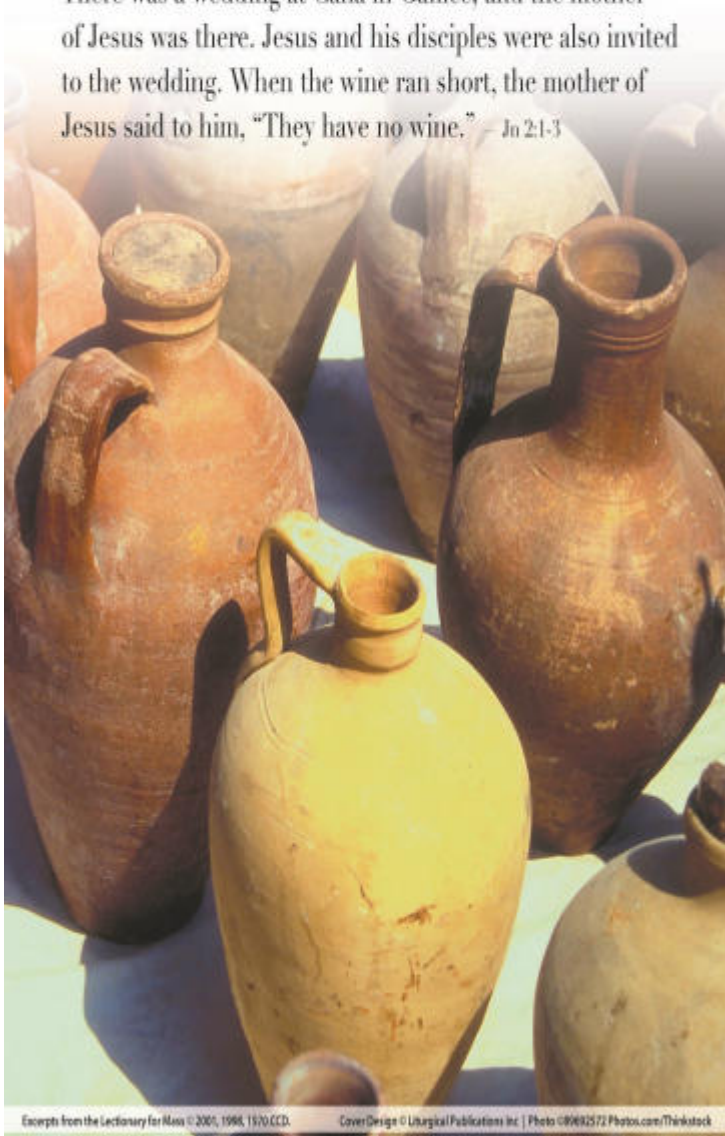


Second Sunday in Ordinary Time

There was a wedding at Cana in Galilee, and the mother of Jesus was there. Jesus and his disciples were also invited to the wedding. When the wine ran short, the mother of Jesus said to him, "They have no wine." — Jn 2:1-3



Highway 60 Catholic Cluster January 20, 2019 Second Sunday in Ordinary Time

Together we share our talents and resources to foster unity among ourselves and one another as we strive to live a life of Christian service with Christ as our example and the Holy Spirit as our guide.

Weekend Mass Times

Saturday: Ashton, 4:30 p.m.
Sunday: Sheldon, 8:30 a.m. (English) and
12:30 p.m. (Español), Sibley, 10:30 a.m.

Sacrament of Reconciliation

Thirty minutes prior to mass and any reasonable time by appointment.

Baptism

Please contact the parish office for more information about baptismal preparation and scheduling your baptismal ceremony.

Holy Matrimony

Please contact the parish office six months prior to the anticipated wedding date.

Adoration

Sheldon: First Friday of the Month 9 a.m.
Thru Saturday 8:00 a.m.

Saint Mary

643 6th St.
Ashton, IA 51232
standrewsibley@premieronline.net
Phone 712-754-2739
Adm. Secretary Christy Funk

Saint Andrew Parish

716 8th St., PO Box 97
Sibley, IA 51249
standrewsibley@premieronline.net
Phone 712-754-2739
DRE/Adm. Secretary Christy Funk
st.andrewssibleyouth@yahoo.com

Father Siby Punnoose, Pastor



Phone: 712-730-6480
Email: punnooses@scdiocese.org
Website: hwy60catholiccluster.org
Website: stpatssheldon.org

Saint Patrick Parish

310 10th St.
Sheldon, IA 51201-1530
nclaar@nethtc.net
Phone 712-324-0160
Adm. Secretary Nancy Claar

Saint Patrick School

1020 4th Ave.
Sheldon, IA 51201-1520
stpat@nethtc.net
Phone 712-324-3181
Principal: Mr. Joe Mueting
Lead Teacher: Mrs. Jessica Schmalen

St. Patrick's School News

School News from January 21-25

Friday, January 25 Mass 7th & 8th Grade

Catholic Schools Week is January 27- February 2:
Catholic Schools Week masses are January 27 at St. Patrick's at 8:30 AM and at St. Mary's in Ashton on February 2 at 4:30 PM.

There will be lots of activities for Catholic Schools Week and we would like to invite EVERYONE to the Taco Supper on Monday, January 28 from 5-7 PM

St. Pat's Scrip is available anytime there is someone at the school or after the mass on Sunday in Sheldon. Dairy Dandy has changed their donation amount to 10%. Let's support these businesses that are supporting our school by giving a discount. This raises money for the school and parish and for school families for their tuition. The Scrip program gives \$750 a month to school or church. Thank you to all you use the scrip program faithfully but we could make more money if more people would use this program. Any questions, please call the school.

Thank You! MY SINCERE THANK YOU..
Thank you all for your thoughtfulness, your cards, encouraging words, greetings and gifts during this holy season of Christmas. I am blessed with 3 wonderful parishes. God bless you all and praying for you all.

Fr. Siby

Available Ad Space

Build your business and help us grow a vibrant faith community!

Bram from LPi, our bulletin printer, will be in our office the week of **January 21st**, securing new ads for our bulletin. Please consider purchasing an ad, sponsoring a charity, or in Memory of a Loved One. Your participation makes our bulletin successful, and you attract customers!

BENEFITS OF ADVERTISING

- Local, targeted community advertising for **one full year, at one low price.**
- A **FREE** ad listing on parishesonline.com.
- **FREE**, professional ad design, and 4 free ad changes per year.

Bram Swingle
319-596-5286 | bwingle@4LPi.com

 **BECAUSE VIBRANT CHURCHES MATTER**

Cluster Events

Ashton=St. Mary Sibley=St. Andrew
Sheldon=St. Patrick School=St. Patrick School

Sunday, January 20

- **Sheldon**—9:30 a.m.—12 p.m. Sponsor/Teen Confirmation Retreat
- **Sibley**—10 a.m. CDofA Rosary
- **Sibley**—after Mass—Chili Cook-Off
- **Sheldon**—5 p.m. Knights of Columbus District Meeting—Presentation Room

Monday, January 21

- **School**—4:15 p.m. MS Wrestling at Home

Tuesday, January 22

- **Sheldon**—11 a.m. Rosary at Fieldcrest
- **School**—3:15 p.m. Art Club
- **School**—3:15 p.m. MS Homework Help
- **Sibley**—6 p.m. Council meeting
- **Sheldon**—6:30 p.m. Spanish Bible Study—Presentation Room

Wednesday, January 23

- **School**—2:15 p.m. Early Dismissal
- **Sheldon**—5:30 p.m. St. Patrick Finance Board—Presentation
- **Sibley**—6 p.m. Kindergarten through 5th Grade Religious Ed classes. 7 p.m. 6th through 8th Grade and Confirmation as scheduled
- **Sheldon**—7 p.m. Religious Education

Thursday, January 24

- **School**—4:15 p.m. MS Wrestling at Cherokee
- **School**—4:15 p.m. 7th Girls BB at Home

Friday, January 25

- **Ashton**—9 a.m. Morning Prayer
- **School**—3:15 p.m. Chess Club

Saturday, January 26

- **Sheldon**—10 a.m. Knights of Columbus Spelling Bee at St. Patrick School

Sunday, January 27

- **Sheldon**—8:30 a.m. Catholic School Week Mass—St. Patrick
- **Sheldon**—9:30 a.m. Guild Coffee and Rolls
- **Sheldon**—12 noon Knights of Columbus Free Throw Competition at village Northwest Gym—Contest starts at 1 p.m.

Inspirational Corner

Volunteer at the Unity Meal this Monday night. They are in need of extra help this month. Service to others always shows you God's presence in the world! Call Paulette to discuss time slots open for volunteers from 5-8 pm



St. Patrick



ST. PATRICK RELIGIOUS EDUCATION

Paulette Karolczak, Director of Religious Education
(DRE)-712-324-0160/712-348-3132

The Confirmation Sponsor/Teen Retreat
will be held in the cafeteria after Mass today
from 9:30-12 noon.



Faith Sharing Group - Stop in and
join us for fellowship & faith shar-
ing Friday, January 25 from noon-
1:00 in the Presentation Room!

The Sheldon Area Unity Meal will be held Monday, Janu-
ary 21 at Living Water Community Church - Sheldon Cam-
pus at 6:00 p.m. Serving starts at 6:00 p.m. Everyone is
welcome.

Thank you to Sheldon United Methodist Church and WIDA
and many others for providing the meal and volunteers this
month.

Thank You! The Uhrich family would like
to thank St. Patrick's parish
for all the support during
the time of Kathy's passing. We sincerely ap-
preciate Father Siby, the musicians, those who
served lunch and everyone who offered pray-
ers and helped in any way. You are a true
blessing.

The Uhrich Family

TRIVIA NIGHT at the Eagles club, February 9, 6 p.m.

Get a team of 6-8 people together and join us for trivia night. Don't have a team but want to play--come and join a table. Cost is \$10 per person with the option to spend more with jail/bail, mulligans and stacking your team. Prizes for the winning team. There will also be a prize for the best themed table decoration/team costume. Doors open at 6:00 for registration and table decorating. Trivia starts at 7:00. Bring an appetizer or dip to share. Proceeds to benefit the St. Pat's PAT. Pre-registration is appreciated but not required. Open to all adults. Call Angie Fischer for more information or to preregister at 348-5022.

CHURCH SUPPORT January 13, 2019

Adults	\$	3,266.00
Second Collection		266.00
Youth		.22
Loose		101.00
Holy Day		10.00
Initial		68.00
Catholic School Week		100.00
Spanish		<u>291.00</u>
Total Parish Income	\$	4,102.22

We were short \$ 2,747.78 of meeting the weekly
goal of \$6,850.00 needed to meet the expenses
of St. Patrick Parish.

2019	\$15,700.31
2018	5,194.07
2017	7,921.11



Knights of Columbus

The KC Spelling Bee will be on
Saturday, January 26 at 10 a.m.
at St. Patrick School.

The KC Free Throw Contest will be
Sunday, January 27 at 1 p.m. at the Wansink
Center at Village Northwest.

If you have any questions please contact Jim
Gude(324-2385) or Ron Jansen (324-2745),

St. Pat's School Board Taco Supper
Monday January 28, 2019
Serving 5-7 in the church basement
Hard shell, soft shell and walking tacos





St. Mary and St. Andrew



Combined Stewardship January 13

Adult	\$2,424.50
Sibley Loose	\$ 87.25
Ashton Loose	\$ 74.00
Children	\$ 18.50
Total	\$2,604.25
Religious Ed	\$ 200.00
Briar Cliff	\$ 50.00
Building Fund	\$ 245.00

Building Fund Drive Goal \$75,000
Received \$10,148.15

DAA

Goal	\$19,937.00
Pledged	\$12,699.09
Received	\$11,499.09



Friday Morning Prayer

You are invited to join the Friday Morning Prayer group anytime it works in your schedule. We pray for YOU, we pray for those who are ILL and those in the NURSING HOMES and CARE FACILITIES, and we pray for OUR COUNTRY. Come and spend one hour with us, prayer, food and fellowship at 9:00 am. When schools in the area are closed, so are we.

DAA REMINDER—Did you forget your DAA contribution or misplace your envelope. You can still donate to DAA. Write your check to DAA. Place in an envelope and mark the envelope DAA. If you have any questions, please contact Christy.

One other thing—if we don't meet our goal, the church still has to pay out the money from the collection to meet our goal.



2018 Contribution Statements are available at the communication center at St. Andrew and the entrance of St. Mary. If there are any questions or corrections needed, please contact Christy at 712-754-2739.



St Andrew's will be responsible for Meals on wheels Feb 11-22. If anyone would like to volunteer to deliver meals it takes about an hour of your time one day a week to help those in need give Mel Seivert a call at 605-212-5289. Thanks

A special Thank You to Chris Paca, Betty Wessels, Danielle Nasers, Kathleen Osterman, Jeni Sarringar & Julie Eddy for hosting the Women's Winter Party, The food, decorations & games were outstanding, & enjoyed by all in attendance!



St. Andrew's Soup and Pie RAFFLE is Wed. March 13th! Please consider donating a raffle item, large or small, gift card, etc. You may also help fund our Grand Prize, a "\$500.00 TREASURE CHEST", if you wish. Proceeds help our youth group fund their mission trip, and also many guild charity projects. Tickets will be handed out for three Sundays before the raffle for you to sell or buy. They will also be at both entrances. If you let us know by Feb. 15th your item will be listed on the ticket. Please call Bonnie Gregg 754-4812, Patty Klein 754-4165, Lois Marco 754-2046, or Yvonne O'Leary 754-3467. THANKYOU for your help!



St. Andrew Church/St. Mary Church is having a 100 day Raffle to help with the Building Fund Drive.

RAFFLE PROCEDURE

No more than 150 tickets will be sold. Each ticket costs \$100.

- Make Checks Payable to: St. Andrew Building Fund Drive
- 100 drawings; 1 drawing for each weekday and Saturday beginning February 1, 2019.
- Each raffle entry is eligible for every one of the 100 drawings.
- Raffle prizes for each drawing are as shown on the calendar.
- Prizes delivered or mailed weekly.
- For drawing results, contact the seller of your ticket, or you may look on the website for St. Andrew/St. Mary at hwy60catholic-cluster.org
- Any proceeds over the tuckpointing of the church will be used for building up-keep at St. Andrew and St. Mary.
- St. Andrew Council has final decisions on raffle procedures.

Please join us on Sunday, January 20, 2019 for the 2nd Annual St Andrews Parish Chili Cook off/feed. Judging will begin following 10:30 am Mass. Everyone is welcome to come vote for your favorite chili.

Registration is \$20 prior to Jan 13 and \$25 day of cook off.

Prizes are: 1st \$75; 2nd \$50; 3rd \$25

All other proceeds will be donated to the St Andrews youth group. Contact the Faith Center Office (712) 754-2739, Jeni Sarringar (515-570-2296) or Wendy Marco (712-461-2458) to register.

Soup (chili and/or chicken noodle) will be served for attendees for a free will donation, also in support of the youth.

We hope to see you there!

Liturgical Assignments

Saturday, Jan. 26, 4:30 p.m.—Ashton

Lector	Sherry Nilles
EME	Barb Nilles, Kris Schoo, Barb Tremmel
Servers	Norb Strouth, Shakota Burmeister
Greeters/Gifts	Loren & Nancy Marnach
Ushers	Bob Schoo, Walt Seivert, Ron Thole, Gary Trei

Sunday, Jan. 27, 8:30 a.m.—Sheldon

Communion Cup	Mike & Jody Olson
Ciborium	Mark Nilles, Tim & Karen Pottebaum
Lector	Paula Morgan
Commentator	Aubren Budden
Hospital/Sanford	Bonnie Roder
Route	Joe Nilles
Gift Bearers	Ryan Dobbins Family
Servers	Kainan Reiter, Zach Brinkman
Ushers	Tom Youngers, Myles DeBates, Chuck, Bobby, Jessica Beldt, Justin Jonas, Doug Heiliger, Annie McCabe, McKenzie Wagner, Jon Rozeboom
Children's Lit	Lead: McKenzie, Laura Wagner Assist: Jenaetta Budden, Adam McDonald

Sunday, Jan. 27, 10:30 a.m.—Sibley

EME	Pat & Julie Eddy, Bonnie Gregg
Lector	Bonnie Gregg
Servers	Gannon Atherton, Dominic Marco
Gifts	Lila Hatting & Janet Steinke
Ushers	Nancy Nasers, Carl Palsrok, Mike Steichen, Carson Steichen
NH Communion	Julie Schroder
Home/HWH Communion	Kathy Ver Steeg
Sacristy Assistant	Mindy Nasers
Counters	Pat & Julie Eddy
Children's Liturgy	Mindy Nasers

Would you consider leaving St. Andrew, St. Mary or St. Patrick in your will? Contact the Diocese of Sioux City Office of Communications & Development to learn more about how this simple step today can leave a legacy tomorrow.

Mass Intentions

**Ashton=St. Mary Sheldon=St. Patrick
Sibley=St. Andrew**

Saturday, January 19

4:30 p.m. Ashton Steve Schwebach

Sunday, January 20

8:30 am Sheldon Connie Plum
10:30 a.m. Sibley Sherry McElroy and For
the Parishes of the
Cluster
12:30 p.m. Sheldon (Español) Orville & Betty
Gloden

Monday—January 21—No Mass

Tuesday—January 22

8:00 a.m. Sibley Family of Kathy Ver
Steeg

Wednesday—January 23

8:00 a.m. Ashton Mark Marco

Thursday, January 24

8:00 a.m. Sibley George Benda

Friday, January 25

8:45 a.m. Sheldon "Ome" Klein and For
Poor Souls in Purgatory
and Special Intention

Saturday, January 26

4:30 p.m. Ashton Robert Budden

Sunday, January 27

8:30 am Sheldon Janet Wepler and
Angie McGillick
10:30 a.m. Sibley Sally Marnach and For
the Parishes of the
Cluster
12:30 p.m. Sheldon (Español) Delmer &
Charlene Lehner

Weekly Readings

Monday:	Heb 5:1-10/Ps 110:1, 2, 3, 4 [4b]/Mk 2:18-22
Tuesday:	Heb 6:10-20/Ps 111:1-2, 4-5, 9 and 10c [5]/Mk 2:23-28
Wednesday:	Heb 7:1-3, 15-17/Ps 110:1, 2, 3, 4 [4b]/Mk 3:1-6
Thursday:	Heb 7:25—8:6/Ps 40:7-8a, 8b-9, 10, 17 [8a and 9a]/Mk 3:7-12
Friday:	Acts 22:3-16 or Acts 9:1-22/Ps 117:1bc, 2 [Mk 16:15]/Mk 16:15-18
Saturday:	2 Tm 1:1-8 or Ti 1:1-5/Ps 96:1-2a, 2b-3, 7-8a, 10 [3]/Mk 3:20-21

catholicmatch[®]
Iowa



CatholicMatch.com/IA

VANDER PLOEG FUNERAL HOMES
Sheldon IA 712-324-3331 Boyden IA 712-725-2101
"SERVING FAMILIES FROM THE SHELDON AND BOYDEN AREA FOR OVER 60 YEARS."
Peter M Eldridge Matthew Ascherl
Funeral Director Parishoner/Funeral Director
Benjamin J Eldridge
Funeral Director

Andringa
FUNERAL HOME

Locally owned and operated for 35 years

Larry R. Andringa
Funeral Director

Serving Sibley & Surrounding Area
(712) 754-4631
www.andringafuneralhome.com


SPREAD THE WORD
A Thriving, Vibrant Community Matters



SUPPORT OUR ADVERTISERS



Sibley Veterinary Clinic
Large and Small Animal Services
Dr. Daniel Berkland
Dr. Loretta Berkland
Dr. Ashley Hoogland
1654 Northwest Blvd
Sibley, IA 51249
Phone: 712-754-2549
Fax: 712-754-2252
sib72vet@premieronline.net
Digital Thermography
Certified Laser Therapy
Pet Grooming & Boarding
24 Hour Emergency Service

FARM BUREAU FINANCIAL SERVICES
Randy Van De Berg, Agent
916 4th Ave, Sibley
(712) 754-4141
Wellmark.  Your Health. Well Protected.

Pizza Hut

712-754-4641
MENTION THIS AD AND RECEIVE 10% OFF YOUR ORDER

Schwarz Sanitary Service
COMMERCIAL & RESIDENTIAL PICKUP
"OUR BUSINESS IS PICKING UP"
Bernard Schwarz - Owner
324.3543
or call Jeff at 324.5107
234 N. 5th AVE. • Sheldon, IA

SUNDSTROM'S DAIRY DANDY
CHICKEN, SHRIMP, HAMBURGERS
SHAKES & CYCLONES
We Deliver all day within 1 mile of Sheldon
\$10 minimum \$2 delivery fee
Phone 324-2830
Hwy. 60 South, Sheldon
Open 10:30am-10 pm 7 Days A Week

KOOPMAN, KENNEDY & FELLER
ATTORNEYS AT LAW

JOSEPH M. FELLER
ATTORNEY AT LAW
823 3RD AVE. • SIBLEY, IA 51249
712-754-4654 • jfeller@kkfellerlaw.com

HTC Communications

Internet, TV, Telephone
Business & Residential
hosperstel.com
800-813-2023

1015 STEAK COMPANY

1015 2nd Ave. • Sibley
712-754-3540
Tues.-Sat. 4-9 • Lunch-Thurs. & Fri. at 11 am

MORGAN COLLISION & TIRE CENTER
Full Service Automotive & Collision Repair Facility
Foreign & Domestic Diagnostics
210 West Park Sheldon, IA 51201 (712) 324-3600 (712) 324-3542

KLAASSEN REALTY
WE COVER NORTHWEST IOWA
Real Estate • Auctions • Appraisals • Farmland
Offices in Sibley, Hartley, Sheldon
712-754-3500 • www.klaassenrealty.com • 120 Ninth Street • Sibley, IA

BFS
LAWN & TREE SERVICE
Serving the Sibley area since 1997
Lawn Care Services at "Do-It-Yourself" Prices!
Call us at 800-728-1128 for your FREE ESTIMATE and LAWN ANALYSIS

HELP PROTECT YOUR FAMILY

With a home security system monitored by ADT professionals 24 hours a day, 7 days a week. As an added benefit, installing a Security System may qualify you for a Homeowner's Insurance discount.

CALL NOW! 1-888-891-6806



MEGA, Inc.

- GPS guided farm tiling
- Basement & foundation excavation
- Backhoe work for water & sewer lines

Rocky Marco • Ocheyedon • 712/758-3503

ADS
ADVANCED DRAINAGE SYSTEMS, INC.

KIN Pork, Inc.
Feeding the Nation with Top Quality Pork
Family owned/Family operated
Debra & Jeff Kohn • Clark Iedema
Greg & Michelle Nasers • Scott & Mindy Nasers

Fred's Plumbing & Heating
Hospers, Iowa
712-752-8525

Schottsy's Liquor **Schottsy's BAR & GRILL**

109 5th Street, Sibley, IA 51249 712-754-2413
1319 2nd Ave, Sheldon, IA 51201 712-324-3569

Sibley Sheet Metal, Inc.
Heating and Cooling
LENNOX
712-754-4118
"Compliments Of"

AVAILABLE FOR A LIMITED TIME

ADVERTISE YOUR BUSINESS HERE

Contact **Abraham Swingle** to place an ad today!
aswingle@4LPi.com or (800) 950-9952 x2640

Jeddeloh FORD
SIBLEY, IA
712-754-4651
www.jeddelohinc.com

SUBWAY
1706 Pierce Ave., Sibley
712-754-4848
www.subway.com

Complete Diesel Repair
for Tractors & Trucks
Adam Hoekstra Repair
1610 Vine Ave. Ocheyedon
712-330-9473